

ZOOMLION

NEW ROUGH TERRAIN **ZA16JERT** ELECTRIC ARTICULATING BOOM LIFT

Comply with CE/ANSI Standard

HIGHLIGHTS

- ▶ Center layout, great structural rigidity, and small boom deflection
- ▶ Accurate and efficient traveling AC drive system provides strong power and stable control, motor maintenance-free
- ▶ First electrical off-road articulating boom lift of 16m height with strong power suits for complicated working conditions

FEATURES

Standard Features

- Proportional control
- All motion alarm
- Flashing beacon
- Self-closing entry gate
- Emergency descent system
- Emergency stop button
- Auto-leveling system
- On-board diagnostic system
- Over tilt protection system
- Load sensing system
- 4.3' LED display
- Horn
- Secondary guarding system

Accessories & Options

- AC power to platform
- Air line to platform
- Non-marking tire
- Platform work lights
- Low-temperature Hydraulic Oil

ACCESS WITH ZOOMLION GREEN

Phone: 0086(731)-88353680 0086(731)-88250971
E-mail: awm@zoomlion.com

Add: ZOOMLION Wangcheng Industrial Park, Tengfei Road 997, Changsha, Hunan, China
Web: www.en.zoomlion.com

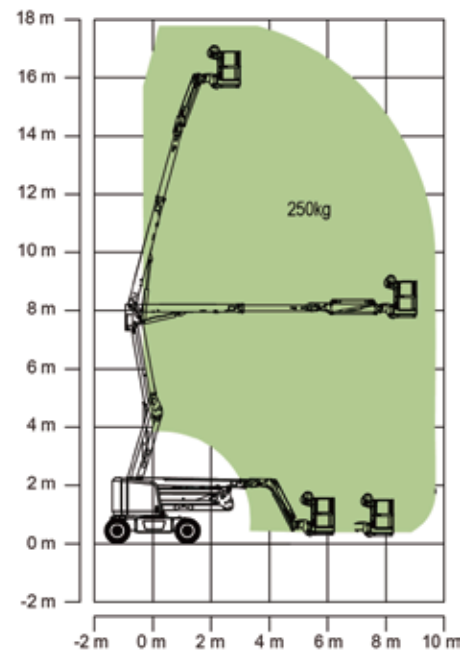
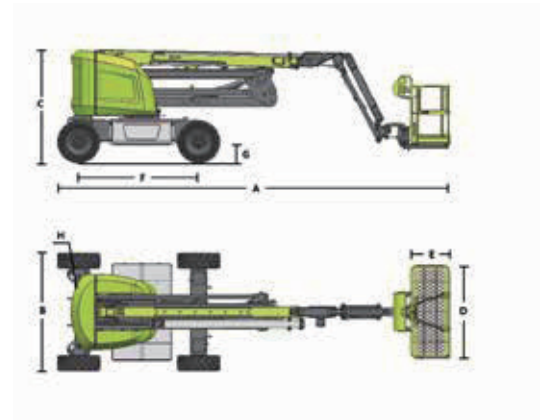
ZOOMLION

ROUGH TERRAIN ELECTRIC ARTICULATING BOOM LIFT

NEW ROUGH TERRAIN

ZA16JERT Comply with CE/ANSI Standard

Model	ZA16JERT	
	Imperial	Metric
Size		
Work Height	58ft 5in	17.8m
Platform Height	51ft 10in	15.8m
Horizontal Outreach	31ft 11in	9.72m
Up and Over Height	26ft 3in	8m
A - Stowed Length	25ft 3in	7.7m
B - Stowed Width	7ft 6in	2.3m
C - Stowed Height	7ft 4in	2.23m
D - Platform Length	6ft	1.83m
E - Platform Width	2ft 6in	0.76m
Jib Length	5ft	1.53m
F - Wheelbase	7ft 9in	2.36m
G - Ground Clearance	1ft 2in	0.36m
Performance		
Platform Capacity	550 lb	250kg
Drive Speed	3.79 mph	6.1km/h
Gradeability	45%(24°)	
Axles Oscillation	8in	0.20m
Turning Radius (Inside)	6ft 9in	2.06m
Turning Radius (Outside)	15ft 8in	4.78m
Turntable Swing	360° non-continuous	
Platform Rotation	±90°	
H-Tail Swing	8in	0.2m
Max. Wind Speed	27.96mph	12.5m/s
Power		
Battery	24×2V/320Ah	
Charger	48V/35A	
Drive Motor	AC 32V	
Lift Motor	AC 32V	
Auxiliary Power	12V DC Electrical pump	
Hydraulic Tank Capacity	7.9 (us gal)	30L
Tire		
Type	33×12 Foam-filled tire	
Weight		
Gross	16093 lb	7300 kg



Range of Motion ZA16JERT

ZOOMLION ACCESS reserves the right to make specification and/or equipment changes without prior notification. Product specifications are updated to April, 2022.